

X2
LOGISTICS
NETWORKS



X2 Logistics Networks

Dynamic and Professional
Independent Freight Forwarders
Working Together as One

www.x2logisticsnetworks.com

What is X2 Logistics Networks?

X2 Logistics Networks is composed of multiple groups of global logistics professionals and independent freight forwarders who are experts in their fields and specialties.

The members of X2 Logistics Networks represent major sea and airports around the world and across different industry sectors. X2 Logistics Networks is the world's most professional freight forwarding network and one of the only groups who believe in the quality of members, and not the quantity. This philosophy ensures the existence of a strong and thriving network.

X2 Logistics Networks members are heavily vetted professionals that have demonstrated their commitment to providing the best possible service to meet and exceed customer requirements. The companies of X2 Logistics Networks specialise in providing comprehensive and competitive logistics solutions around the world.

The member organisations of X2 Logistics Networks benefit from:

- Professional and Vetted Global Freight Forwarding Partners
- Financial Protection
- Limited Membership per Market
- Free PR/Marketing Opportunities and Services
- X2's Partner Programme of Leading Suppliers and Vendors
- Cutting Edge Technology Platforms
- Global, Frequent Meeting Opportunities



About Us

X2 Logistics Networks are the premier networks of independent logistics and freight professionals representing major air and seaports around the world. It's also the world's most professional freight forwarding network. We pride ourselves on the professional quality of our membership.

All companies within the group understand the unique requirements of their customers and all are able to provide comprehensive and competitive logistics solutions in all major markets around the world. A truly global coverage.

X2 Logistics Networks is dedicated to growing a professional community of reliable and capable logistics experts and is actively pushing to further develop our networks and assist members for the greater benefit of one another.

With our vision to commercially develop and manage a dynamic group, we aim to deliver a true ROI to our members. The X2 Team is continuously improving the network and in turn the benefits reaped by our members. X2 stays on the cutting edge of technology and industry trends so you don't have to.

Our team and management has more than 50 years of combined logistics experience and is capable of conversing in more than 15 different languages whilst bringing with them the experience and skills acquired from a wide range of business development and networking experience positions needed to run an effective global platform.



X2 Member Benefits



**Trusted and
vetted partners**



**Automatic financial
protection**



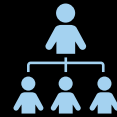
**Limited
Membership**



Professional assistance
with business
development



Access to a network of
reliable and ethical
forwarders



Dynamic and active
network management
team



Participation in the annual
X2 Conference to build
members relationships



Improved quality of
existing agent network and
customer service globally



Free PR/Marketing
Opportunities



Specific market expansion
and regional growth



Strategic
partnerships



Free business
advertisement



www.x2logisticsnetworks.com



X2 Elite

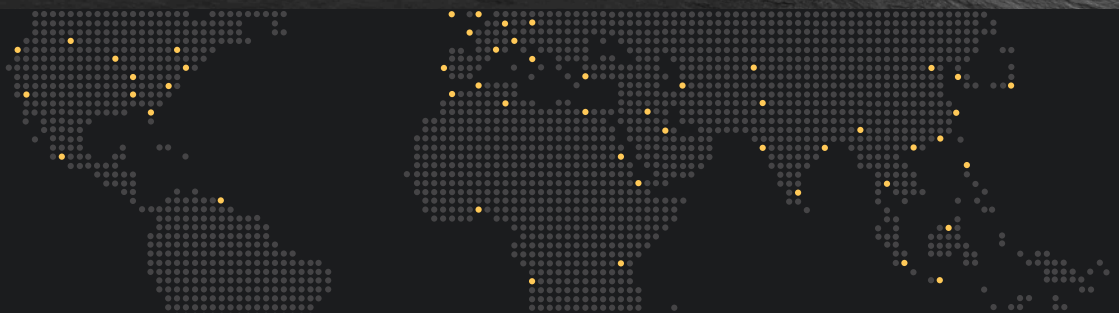
Are you a freight forwarder seeking reliability, expertise and strong partnerships? If yes, the professional members of X2 Elite are capable of meeting your needs. X2 Elite provides you with independent and professional freight forwarder partners from around the world.

X2 Elite is the world's most professional logistics network and is a globally recognized group of independent freight forwarders with a strong dynamic that supports members to grow their businesses.

X2 Elite members can provide the full range of services, including but not limited to:

- Full import and export distribution services
- Door-to-door delivery
- Port to port services
- LCL consolidation
- Documentation services
- Customs clearance
- Warehousing and distribution

www.x2elite.com



X2 Projects

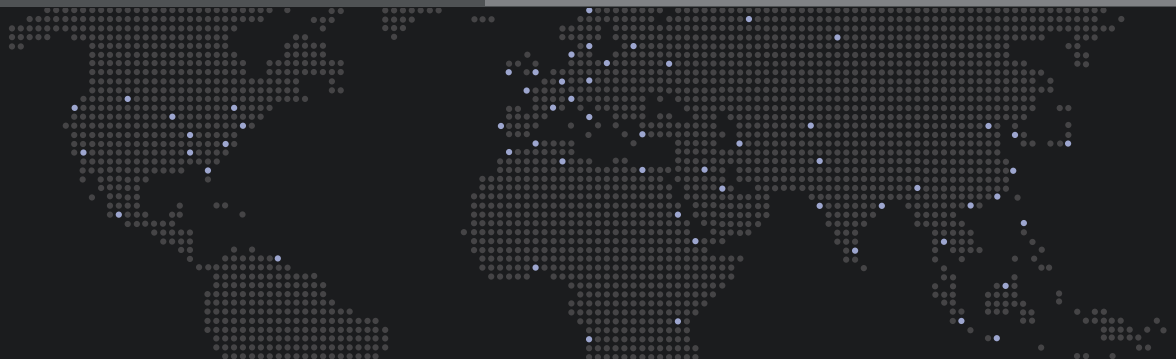
All X2 Projects members have a proven track record in commercial, military, or government project activity and have demonstrated a complete commitment to providing both clients and partners with excellent service and meeting critical deadlines.

Each member brings their expertise in project logistics to the group. X2 Projects members are capable of providing a full range of services to include:

- Pre-qualification documentation assistance and advice
- Obtaining permits and licences
- Full and part air charters and ocean charters
- Heavy lift/oversize cargo
- Dedicated, highly skilled, qualified teams
- Robust knowledge of local infrastructure, requirements and Customs clearance regulations
- Security and peace of mind

All X2 Projects members have been selected for their ability and experience in providing value and problem solving cost-effective solutions.

www.x2projects.com



X2 Cold Chain



X2 Cold Chain is a leading pharmaceutical and temperature-sensitive logistics network. Our members are expert independent freight forwarders in the world and operate with high standards. They have the experience, know-how and expertise to handle pharmaceutical products. From clinical trials and bio pharma to fruits and other perishable cargo.

Our members are professionals who treat all shipments with the care and attention required. Members offer a complete temperature range, from frozen, chilled, heated and controlled. Our members help to ensure the end user, ultimately, the patient, remains first and foremost in their thoughts.

Reasons to become a member of X2 Cold Chain:

- Professional and engaged network management who actively support member efforts to develop business.
- Free PR Desk and marketing opportunities provided through X2 Logistics Networks.
- Connections to fellow professional temperature-sensitive logistics experts with a group mindset.

www.x2coldchain.com



X2 Critical



X2 Critical requires the highest standards in all aspects of business and sets strict criteria regarding business capability, professionalism and quality which must be satisfied before admission into the group.

All members of X2 Critical have dedicated personnel fully versed in the special handling of time critical movements and all can provide a professional and consistent time critical logistics management service.

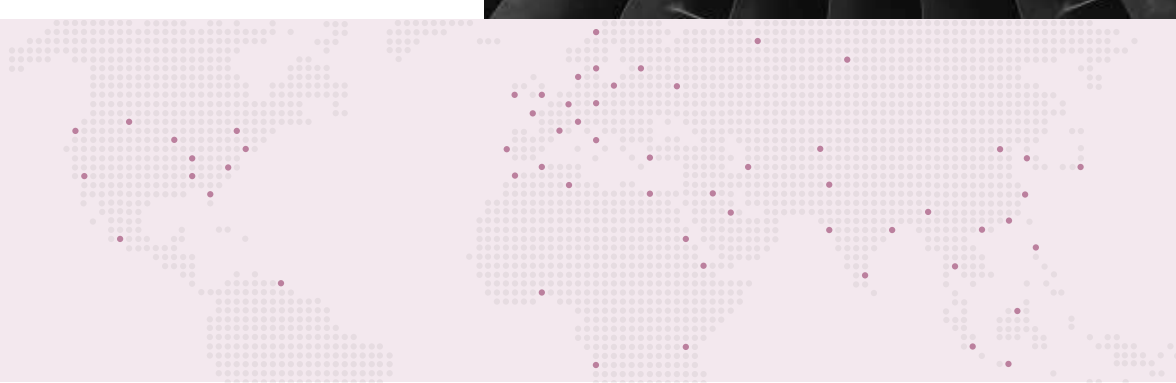
Our members are able to advise clients on the most appropriate method of movement of their goods to ensure products arrive quickly and reliably. Our members work closely with stakeholders to ensure superior and consistent service.

X2 Critical members can provide a full range of services for air, ocean or road movements, with the superior handling quality that is expected of time critical shipments.

Services such as AOG, 24-hour service, dedicated personnel, and active shipment monitoring are readily available throughout the membership.



www.x2critical.com



X2 Movers

The world is more connected than ever and the movement of people across borders is continuously getting easier as globalization accelerates. Because of this, the demand for relocation services is rising and professional movers and relocations service providers have a golden opportunity to grow and expand their business.

X2 Movers enables every member company to offer fully-integrated relocation services to customers regionally and globally. By unlocking the knowledge and reach of X2 Movers and X2 Logistics Networks you'll find enhanced growth opportunities.

X2 Movers actively seeks professional relocation companies to join this exciting new network. If you are a dynamic and dedicated professional in relocations, personal effects and household goods - join the other professionals of X2 Movers.

X2 Movers is unique amongst the groups that make the composition of X2 Logistics Networks. The synergy that exists between relocations and freight forwarders creates a valuable business conduit within the group.

www.x2movers.com



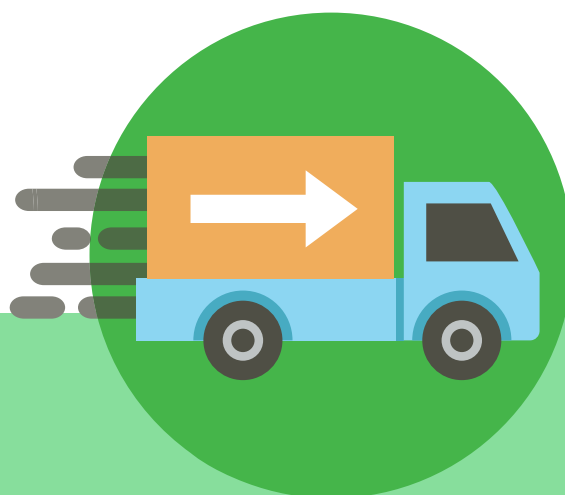
X2 e-Commerce

What is X2 e-Commerce?

X2 e-Commerce is a neutral platform that enables you the opportunity to develop your products, locate partners and identify new customers. You are also able to offer your services through a fully integrated global solution.

If your company is already involved in cross-border e-Commerce and you want to learn more about this exciting high growth market set to dominate the industry over the coming years, you can benefit by becoming an X2 e-Commerce member.

X2 e-Commerce ensures every company is fully equipped and prepared to offer high-quality solutions to partners, shippers and e-Tailers within the group.



Frequently asked questions

▶ **Does the annual X2 membership fee include financial protection? What is the coverage?**

X2 members are financially protected up to 25,000 USD per transaction between network participants and \$100,000 collectively across the course of the year.

▶ **What is the membership limit per region?**

X2 limits the amount of members per market to ensure every member gets their equal share of cargo within the network. This is determined by the size of the market and the trade within that specific country.

▶ **X2 offers PR and marketing services, what can we expect from X2?**

X2 offers multiple forms of support within PR and Marketing not only through our internal Members News, Bulletins & Social media platforms but also in various media outlets. This allows you to reach more inter-network members and also new external clients for your business.

▶ **There are multiple vertical networks within X2, if I join 1 network does this give me access to all of X2 Logistics Networks?**

X2 is made up of 5 categories Elite, Projects, Critical, Cold Chain & Movers. Each network is completely separate with a different group of members and their own respective membership fee.

▶ **How do you qualify “Trusted and professional global freight forwarding partners” within X2?**

Each prospective member company is required to submit strong commercial references to satisfy the requirements of the management of X2.

It is imperative for you to prove your expertise in your local markets and ensure that you have a positive reputation with other agents and carriers as well as that your company has professional leadership with integrity in order to be enrolled.

▶ **Is X2 built up of sea freight specialists or air freight specialists?**

X2 is built up of a number of great companies who all have their own identities within their specific markets. All members can undertake both modes of transport but their strong point will come down to their geographical & market location.

▶ **Are your members' details made public and can non-members gain access to X2 member's details?**

The members area is only accessible for members, however if you do have any questions about specific members in certain markets the X2 team will be happy to advise on the current market status.

▶ **May a company list multiple locations with X2 Logistics Networks?**

X2 does accept multiple offices from prospective members this does come at a surcharge per additional office and fall down to availability within that specific market.

▶ **Is it mandatory to attend the annual conference?**

It isn't mandatory to attend the X2 annual conference however meeting with the members will only garner better long term results by meeting face to face. Failure to attend more than 3 consecutive conferences will leave your renewal under scrutiny from the X2 management.



X2 Pay

Save Your Money Save Your Time

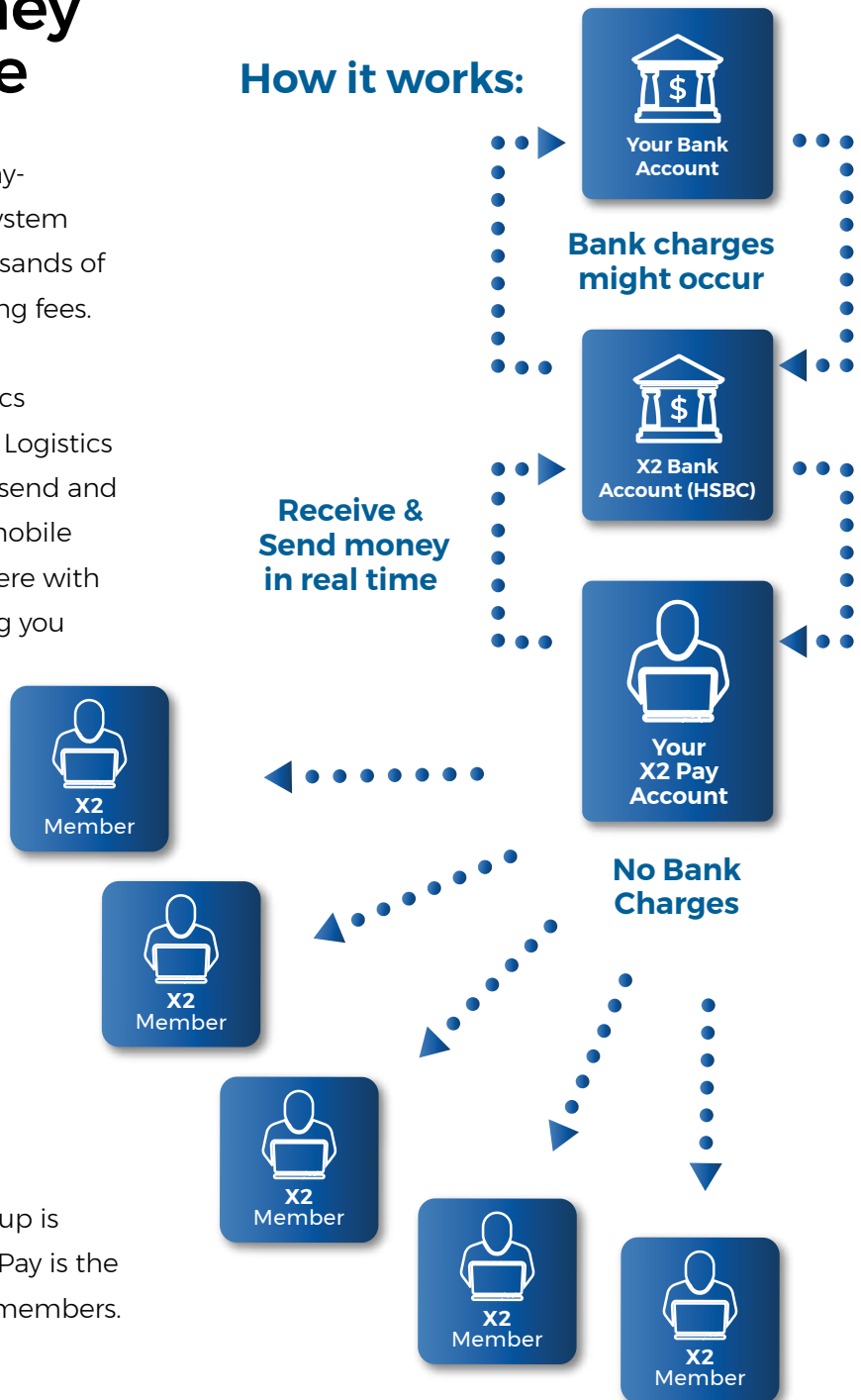
X2 Pay is the easiest to use company-to-company financial transaction system that eliminates fees and saves thousands of dollars, euros, and pounds in banking fees.

X2 Pay was developed by X2 Logistics Networks for exclusive use by its X2 Logistics Networks members. Members can send and receive money instantly. With our mobile site it can be accessed from anywhere with a data connection, whilst protecting you completely from the growing and ever present threat of fraudulent behavior.



Boost profit margins and eliminate banking fees with the safe and secure X2 Pay system. System access is available to all X2 members at no additional cost. Setup is easy, the process is transparent, X2 Pay is the preferred payment method for X2 members.

How it works:



The future is safer and cheaper. The future is X2 Pay.

X2 Freight

X2 Logistics Marketplace

Instant Freight Quotes for Faster Shipping between X2 members only.

FREIGHT RATE

Easily find partner rates to determine who might be best suited to meet the needs of you and your client. See only the rates relevant to your specified search criteria.

BUSINESS STRATEGY

Use X2 Freight as a tool to plan ahead and proactively identify potential partners before you need them for a shipment. X2 Freight is both an instant search and planning tool.

FREIGHT COST

Identify costs and determine what solutions might work best for you. Don't be surprised or caught off guard by partner rates. Identify your costs in advance before initial contact.



www.x2freight.com

The screenshot displays the X2 Freight web application interface. At the top, there is a navigation bar with 'HOME', 'RATE REQUESTS', 'EVENTS', and 'CONTACT US'. Below the navigation bar are several icons for 'NEW RATE REQUEST', 'SHOW ALL REQUESTS', 'REQUESTS RECEIVED', 'REQUESTS ACCEPTED', 'RATES RECEIVED', 'REQUESTS DECLINED', and 'HELP FAQ'. The main content area is divided into two sections: 'New Requests' and 'Accepted Requests'. Both sections show a form with fields for 'My Role', 'Mode', 'Origin', 'Pickup Date', 'Destination', 'Delivery Date', 'Commodity', 'Product', 'D/G', 'Temp', 'Incoterms', and 'Dimensions'. The 'New Requests' section includes a table for 'CPI | CARRIAGE PAID TO' with columns for 'pieces', 'package', 'length', 'width', 'height', and 'weight Kg'. The 'Accepted Requests' section includes a table for 'Weights (kg)' with columns for 'Actual Weight (kg)', 'Volume Weight (kg)', and 'Notes notes notes'. Both sections have 'DECLINE' and 'ACCEPT' buttons.

Online Bookings
Have Never Been so Easy!

Request Rates

Compare Rates

Book Shipment

Save Time & Money

X2 Insurance

Simple coverage - Why Complicate It?

Nacora is the recognized insurance partner of X2 Logistics Networks and offers its unique and exclusive X2 Cargo Protect insurance product to all X2 members.

Nacora is an expert in compliance and works side-by-side with X2 to provide uncomplicated and affordable insurance solutions, whilst maintaining the highest possible standards and levels of professionalism.

Nacora's experienced and dedicated team works with you to provide best guidance for insurance related matters and platform to boost your margins constantly.

NACORA
International Insurance Brokers



Get a quote



X2 Cargo Insurance Calculator



Nacora Quote



Shipment Insure



X2 Cargo e-insurance platform

Claim



Access to X2 Cargo Protect claims experts

More Benefits



Global Coverage



Buying Power



Tailor-Made Solutions

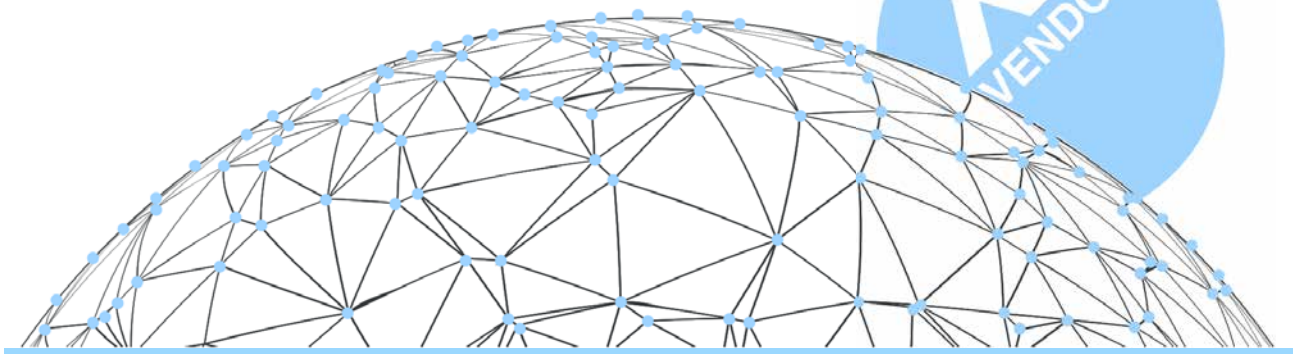


Boost Margins

X2 Vendors

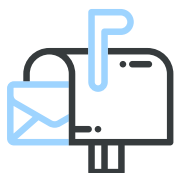
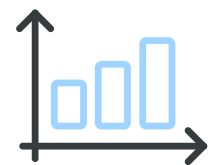
Trusted Service Providers

Connect your business instantly to over 1000 registered X2 Logistics Networks offices through X2 Vendors.



X2 Vendors are allowed special access to the full X2 Logistics Networks membership. As a recognized service provider you can showcase your company, your products and your capabilities to an audience who understands exactly what you are offering.

X2 members can extract extra value from their membership through X2 Vendors when they choose to take advantage of the services provided by our carefully selected X2 Vendors partners.



Send email broadcasts about your services and special offers to a focused audience.

As a member, attend the X2 Annual Conference and other events throughout the year and around the globe.





In Partnership with X2

WiseTech GLOBAL

CargoWise One

The single-platform solution that puts productivity at the center of your supply chain



AIR FREIGHT

SEA FREIGHT

LAND FREIGHT

TRANSPORT MANAGEMENT

WAREHOUSE MANAGEMENT

CFS

ONLINE TRACKING

DAILY STATUS REPORT (DSR)

INVOICE / DEBIT NOTE



SOFTLINK

Simplifying Operations

www.softlinkglobal.com

Logistics IT Specialist

ERP FOR FREIGHT FORWARDERS & LOGISTICS



Logi-Sys

FINANCIAL ACCOUNTING

TAX COMPLIANCE / RETURNS

MOBILE APPS

MULTI-CURRENCY / MULTI-COUNTRY

MARKETING / SALES

ALERTS & NOTIFICATIONS

APPROVAL SYSTEM

ENQUIRY

QUOTATION

LEAD MANAGEMENT

EASY TO USE

DASHBOARD

CUSTOMER NOTIFICATION

TRACKING



ConsolSmart

This patent pending technology uses several complex algorithms to provide all members with savings and efficiency.



Instant Quote



Contract Management



CRM



Track and Trace



Pay Wall



Automated Sales
Generator



Internal
communication



Cargo Insurance

Pricing and Plans

- ✓ Management Dashboard
- ✓ Tradeline Search
- ✓ Instant Booking
- ✓ Contract Management
- ✓ Quotation System
- ✓ Secure Payment
- ✓ Selling Insurance
- ✓ Shipment Trach and Trace
- ✓ Documentation Management
- ✓ Pick-up and Delivery Orders

X2 Global Media

Digital Agency Crafting Attractive & Engaging Brand Experiences

X2 Global Media brings a fresh and energetic vibe to its creations. Our purpose is to help guide your brand write its own unique story.

Design Products

- Logos
- Letterheads
- Graphic Design

Web Products

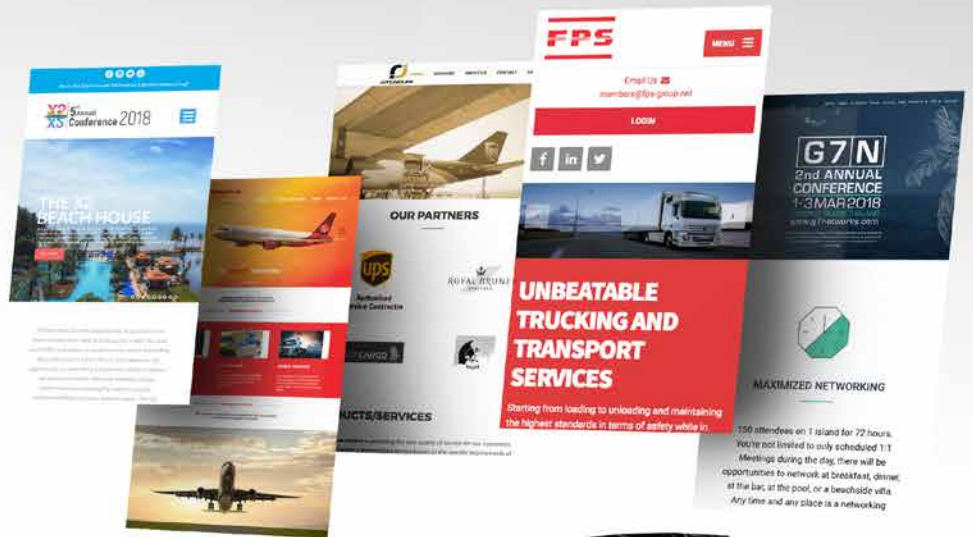
- Web Design
- Newsletters
- Blogs

Events

- Conferences

Social Media

- Strategy
- Management



One Monocle



**One Monocle.
Intelligent third party
network and event
management solutions**

Dedicated to providing
Top-Tier Management Services to all our clients

www.onemonocle.com



📍 170/87 9th Floor Ocean Tower 1 Bldg,
New Rachadaphisek Road, Khlong Toey,
Bangkok, Thailand 10110

☎ + 66-2-648-6123

✉ info@x2logisticsnetworks.com

www.x2logisticsnetworks.com